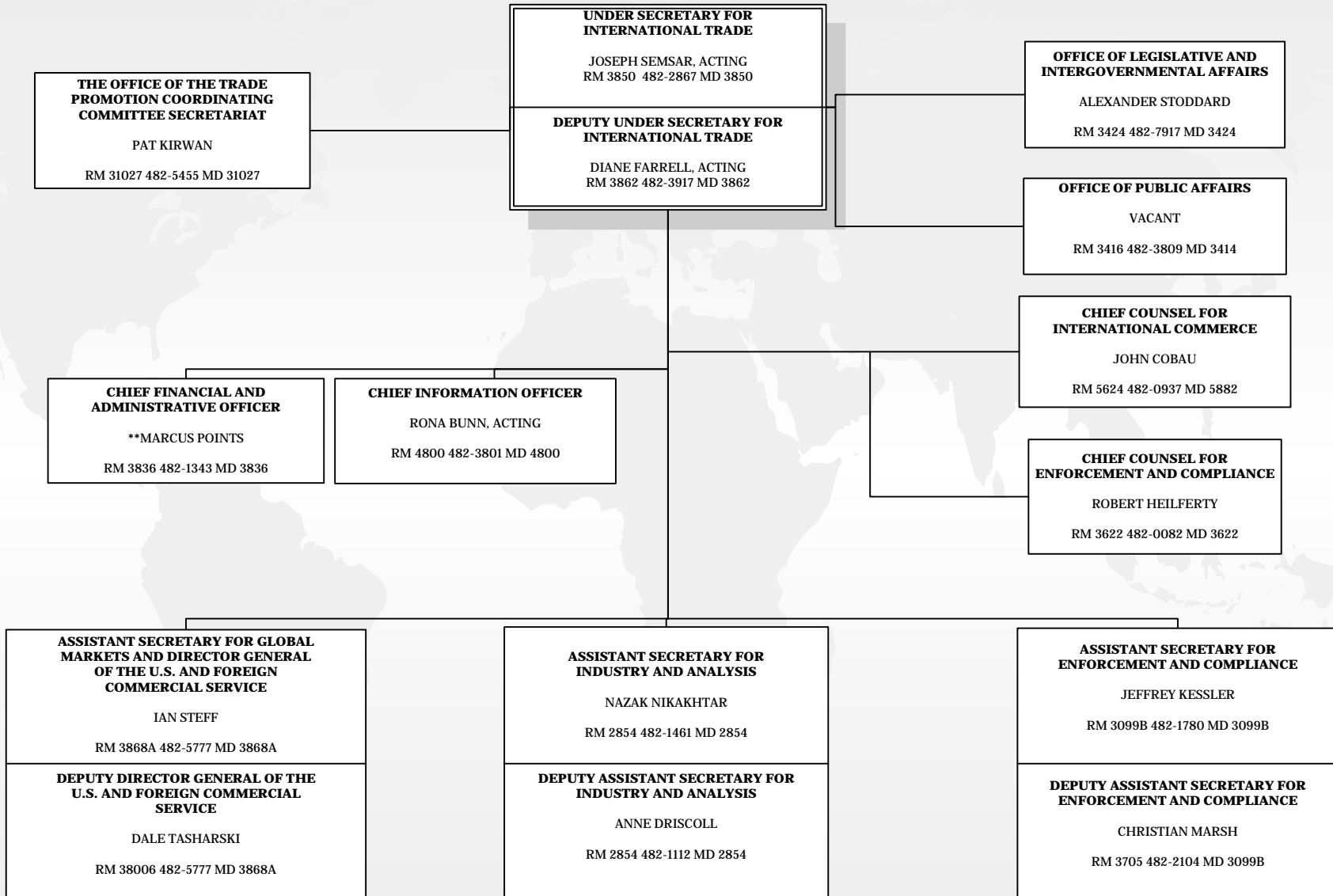


**U.S. DEPARTMENT OF COMMERCE
INTERNATIONAL TRADE ADMINISTRATION
WORK REFERENCE CHART**

01/16/20



*Performing the non-exclusive functions and duties of the PAS position
**Performing the functions and duties of the position.

NOTE: This is a working document and represents the ITA office-level organizational structure. Some persons are designated as acting pending the completion of personnel actions. This chart depicts only persons for which personnel actions have been submitted.

SOURCE: Chief Financial and Administrative Officer, Management Operations Division